

THE PRESERVE AT CANYON RIDGE



All drawings and measurements are for marketing purposes and are approximate.

Due to COVID 19: Because of supply chain delays or lack of material availability, materials and selections might be substituted with equal quality and pricing by the builder.

VIRGINIA-2-STORY-2992 SQ FT

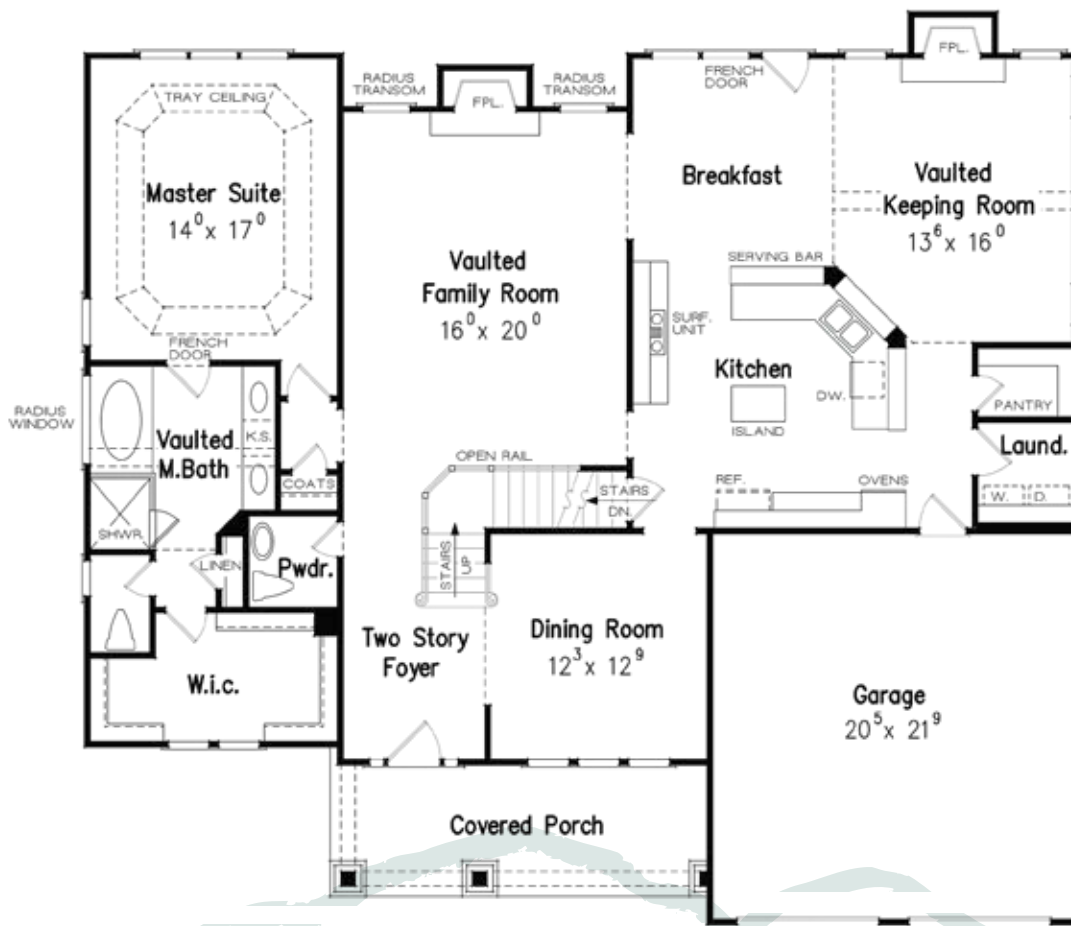
- 4 Bedroom
- Primary Suite on Main Includes Daylight Walk-In Closet
- 3.5 Bath
- Laundry Room Off Kitchen
- LVP Throughout Main Living Area
- Fireplace in Family Room
- Keeping Room With Vaulted Ceiling
- Lots of Kitchen Cabinets and Counter
- Gracious Dining Room
- Elegant 2-Story Foyer and Family Room”

- Open Floor Plan
- Covered Front Porch
- 2 Car Garage

OPTIONAL/UPGRADES

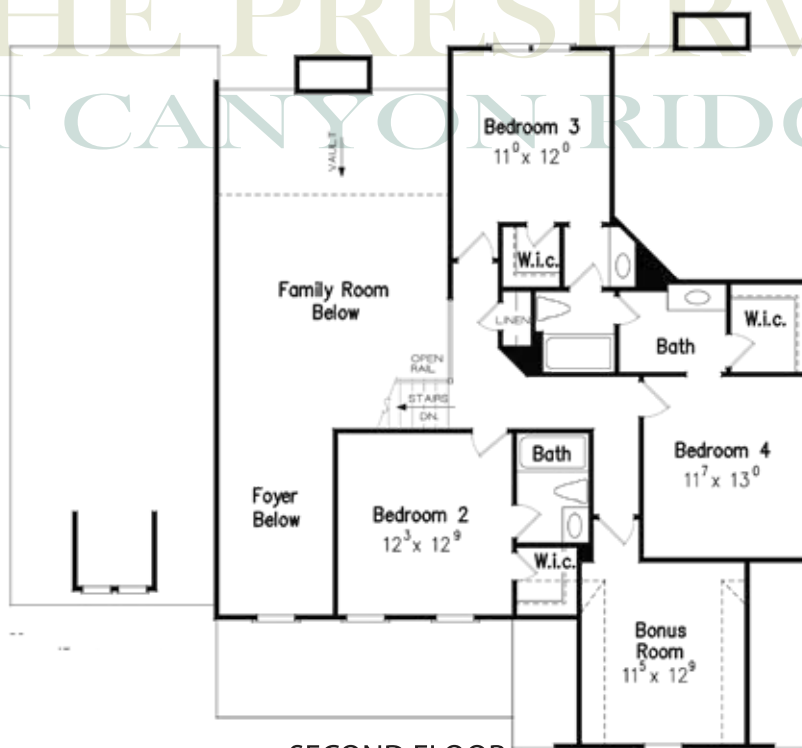
- Add Shake-Style Siding
- Add Additional Stone to Front Elevation
- Add Covered Back Porch
- Add Optional 2nd Fireplace to Keeping Room
- Add Optional Bonus Room Upstairs

ThePreserveAtCanyonRidge.com
770-776-8665



MAIN FLOOR

THE PRESERVE AT CANYON RIDGE



SECOND FLOOR

All drawings and measurements are for marketing purposes and are approximate.

Due to COVID 19: Because of supply chain delays or lack of material availability, materials and selections might be substituted with equal quality and pricing by the builder.